



www.billbeall.com

Re-Platted: 0.81 Acre - 3.15 Acre Tracts For Sale

S. Campbell & Plainview Rd., Springfield, MO



HIGHLIGHTS

- 7 Lots
- Lot 1: 35,271 SF @ \$ 8.00 / SF = \$282,168.00 - FR 157 & Robberson Frontage
- Lot 2: 61,328 SF @ \$ 8.00 / SF = \$490,624.00 - Robberson Frontage
- Lot 3: 75,788 SF @ \$ 8.00 / SF = \$606,304.00 - Robberson Frontage
- Lot 4: 41,800 SF - SOLD
- Lot 5: 59,775 SF @ \$10.00 / SF = \$597,750.00 - S. Campbell Frontage
- Lot 6: 68,883 SF @ \$ 8.00 / SF = \$551,064.00 - Robberson Frontage
- Lot 7: 137,000 SF @ \$9.00 / SF = \$1,233,000.00 - S. Campbell Frontage
- All Utilities
- Traffic Volume: 28,980 Vehicles Per Day
- Zoned: GR - General Retail

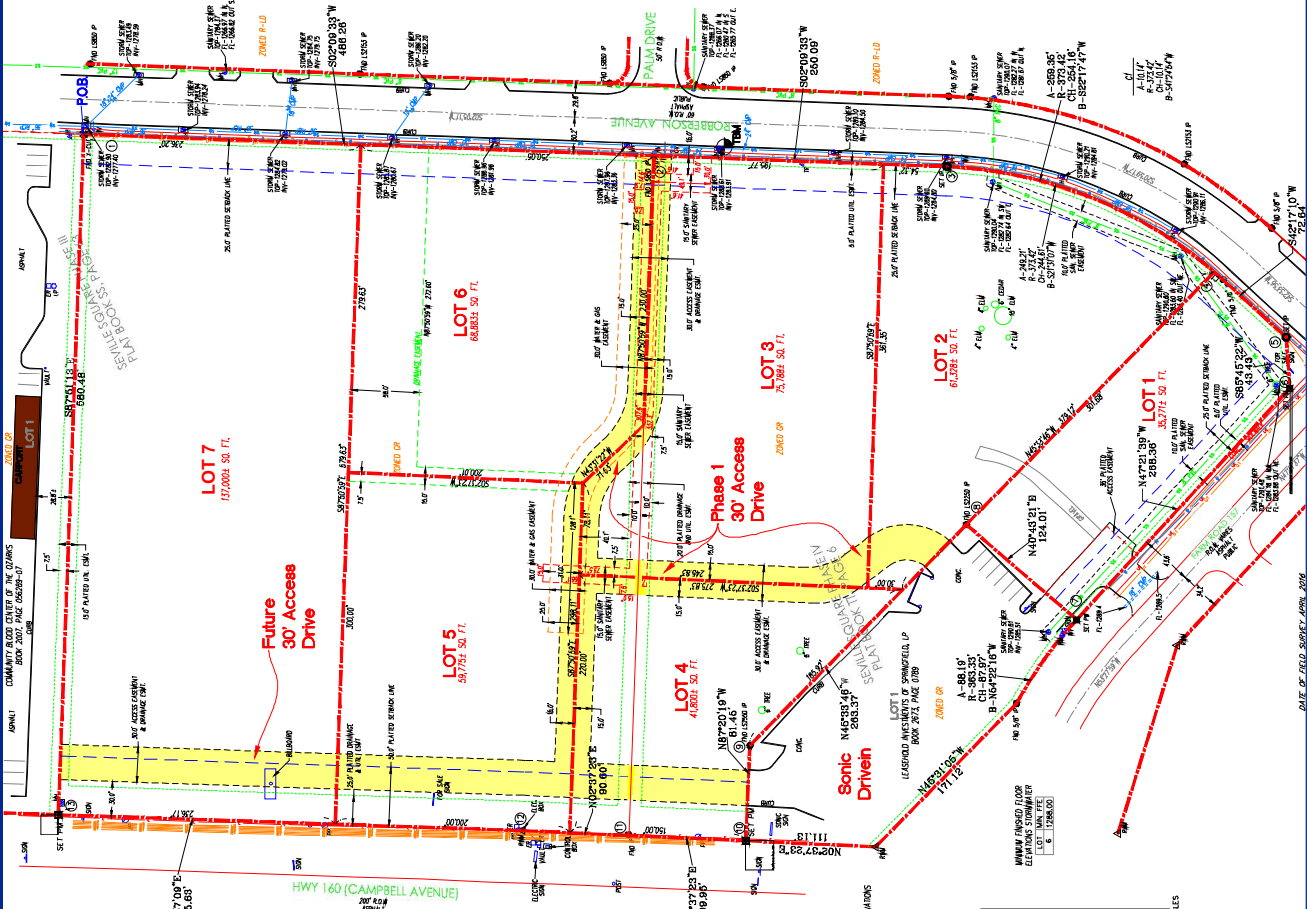
FOR ADDITIONAL INFORMATION CONTACT

Bill Beall Co., Inc.
2921 S. National Ave., Springfield, MO 65804
(417) 887-5535 email: beall@billbeall.com

**ADMINISTRATIVE REFLAT OF
LOT 2 SEVILLE SQUARE PHASE II AND
LOT 2 OF SEVILLE SQUARE PHASE IV
CITY OF SPRINGFIELD, GREENE COUNTY, MISSOURI**

OWNER + DEVELOPER

**SPRINGFIELD LAND + DEVELOPMENT COMPANY, LLC
c/o Bill Beall Co.
2921 SOUTH NATIONAL
SPRINGFIELD, MO. 65804
(417) 887-5535**



INTERIOR ANGLES

1	89°59'44"
2	180°00'00"
3	159°51'56"
4	159°51'56"
5	159°51'56"
6	159°51'56"
7	159°51'56"

SUM OF INTERIOR ANGLES
1800°00'00"

MINIMUM FINISHED FLOOR ELEVATIONS

1	1298.10'
2	1298.10'
3	1298.10'
4	1298.10'
5	1298.10'
6	1298.10'
7	1298.10'

MINIMUM FINISHED FLOOR ELEVATIONS

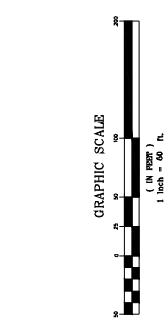
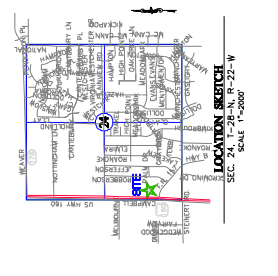
1	1298.10'
2	1298.10'
3	1298.10'
4	1298.10'
5	1298.10'
6	1298.10'
7	1298.10'

MINIMUM FINISHED FLOOR ELEVATIONS

1	1298.10'
2	1298.10'
3	1298.10'
4	1298.10'
5	1298.10'
6	1298.10'
7	1298.10'

MINIMUM FINISHED FLOOR ELEVATIONS

1	1298.10'
2	1298.10'
3	1298.10'
4	1298.10'
5	1298.10'
6	1298.10'
7	1298.10'



ZONING DATA

SUBJECT PROPERTY IS ZONED AS RESIDENTIAL SINGLE-FAMILY (RS-M). THE ZONING MAP IS LOCATED AT THE OFFICE OF THE CITY ENGINEER, 111 N. 1ST ST., SPRINGFIELD, MO. THE ZONING MAP IS A PUBLIC RECORD AND IS AVAILABLE FOR REVIEW AT THE OFFICE OF THE CITY ENGINEER.

THE ZONING MAP IS A PUBLIC RECORD AND IS AVAILABLE FOR REVIEW AT THE OFFICE OF THE CITY ENGINEER, 111 N. 1ST ST., SPRINGFIELD, MO. THE ZONING MAP IS A PUBLIC RECORD AND IS AVAILABLE FOR REVIEW AT THE OFFICE OF THE CITY ENGINEER.

THE ZONING MAP IS A PUBLIC RECORD AND IS AVAILABLE FOR REVIEW AT THE OFFICE OF THE CITY ENGINEER, 111 N. 1ST ST., SPRINGFIELD, MO. THE ZONING MAP IS A PUBLIC RECORD AND IS AVAILABLE FOR REVIEW AT THE OFFICE OF THE CITY ENGINEER.

DATE OF FIELD SURVEY: APRIL 2024